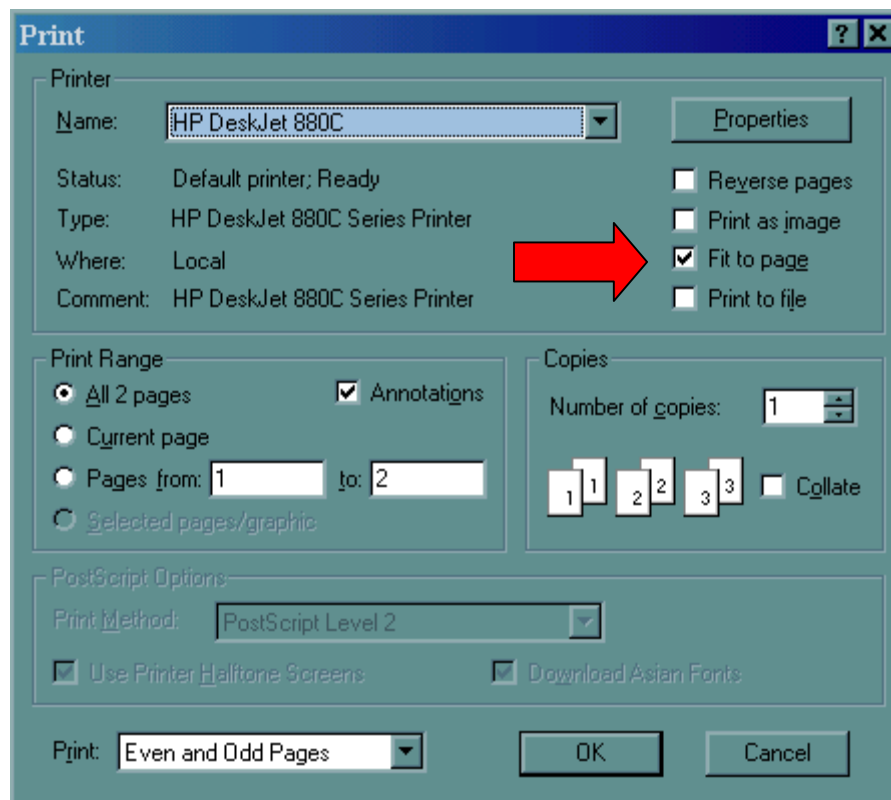


# PLEASE READ THIS BEFORE PRINTING THE CAP TAPE

1. Click the print icon within this program (Adobe Acrobat Reader Toolbar).
2. Deselect the “Fit to page” box so that it is blank.
3. Print Tape and follow instructions.



To confirm that the page printed correctly, fold the paper in half before cutting. The 6 7/8” mark should be positioned approximately 1/16” below the fold line.

# How To Determine Your Cap Size

Print this form at 100% and carefully cut out the three pieces along the dotted lines. Tape the end of B to Line B so the arrows match. Tape the end of C to Line C so the arrows match. Once you have assembled the cap tape, measure your cap size.

A

— **8** —

— **7<sup>7</sup>/<sub>8</sub>** —

— **7<sup>3</sup>/<sub>4</sub>** —

— **7<sup>5</sup>/<sub>8</sub>** —

— **7<sup>1</sup>/<sub>2</sub>** —

— **7<sup>3</sup>/<sub>8</sub>** —

— **7<sup>1</sup>/<sub>4</sub>** —

— **7<sup>1</sup>/<sub>8</sub>** —

— **7** —

— **6<sup>7</sup>/<sub>8</sub>** —

— **6<sup>3</sup>/<sub>4</sub>** —

— **6<sup>5</sup>/<sub>8</sub>** —

— **6<sup>1</sup>/<sub>2</sub>** —

— **6<sup>3</sup>/<sub>8</sub>** —

— **6<sup>1</sup>/<sub>4</sub>** —

Line B

B

To find your correct cap size, place tape around your head about one inch above your ears. Pull tape snug, but not tight. The number where the tape meets shows the correct cap size to order.

Line C

C



the *f*itters  
wife.com

INDICATE  
CORRECT CAP SIZE  
ON ORDER FORM